



BRITISH COLUMBIA  
**FireSmart**<sup>TM</sup>



# Home Ignition Zone

## Extended Zone

10m to 30m

## Intermediate Zone

1.5m to 10m

## Immediate Zone

0m to 1.5m



BRITISH COLUMBIA  
**FireSmart**<sup>TM</sup>

FireSmart, Intelli-feu and other associated Marks are trademarks of the Canadian Interagency Forest Fire Centre.

**There are many factors that may impact your property's risk to wildfire**

Check out the FireSmart Begins at Home Guide for an in-depth look at how you can build wildfire resiliency.

## Immediate Zone

0m to 1.5m

The Immediate Zone is a non-combustible area that starts at the house and extends to a 1.5 metre perimeter around the home and attached structures, including decks. Reduce the chance of wind-blown embers igniting your home by starting with these proactive steps:

- Choose non-combustible building materials when constructing or renovating your home.
- Clear vegetation and combustible material down to mineral soil and cover with non-combustible materials like gravel, brick, or concrete.
- Avoid planting woody shrubs or trees. If any are present, prune and maintain them regularly.

## Intermediate Zone

1.5m to 10m

Elements in the Intermediate Zone are managed so they don't transmit fire to your home. Here are a few actions you can take to reduce your home's vulnerability:

- Plant fire-resistant vegetation and select non-combustible landscaping materials.
- Avoid incorporating any woody debris, including mulch.
- Keep combustible items like firewood piles, construction materials, patio furniture, tools, and decorative pieces out of this zone.
- Move trailers, recreational vehicles, storage sheds, and other combustible structures into the Extended Zone. If that is not possible, store firewood inside your mitigated garage, shed, or other ember-resistant structures.
- Create a non-combustible ground cover, like a gravel pad, underneath and 1.5 metres around trailers, recreational vehicles, and sheds.

## Extended Zone

10m to 30m

The goal in the Extended Zone is not to eliminate fire, but to reduce its intensity. If your property extends into this zone, a few important steps you can take include:

- Selectively remove evergreen trees to create at least 3 metres of horizontal space between the single or grouped tree crowns.
- Remove all branches to a height of 2 metres from the ground.
- Regularly clean up accumulations of fallen branches, dry grass, and needles to eliminate potential surface fuels.
- Continue to apply these principles if your property extends beyond 30m. Work with your neighbours in overlapping zones and seek guidance of a forest professional if affected by other conditions, like steep slopes.

Get started on your FireSmart journey!

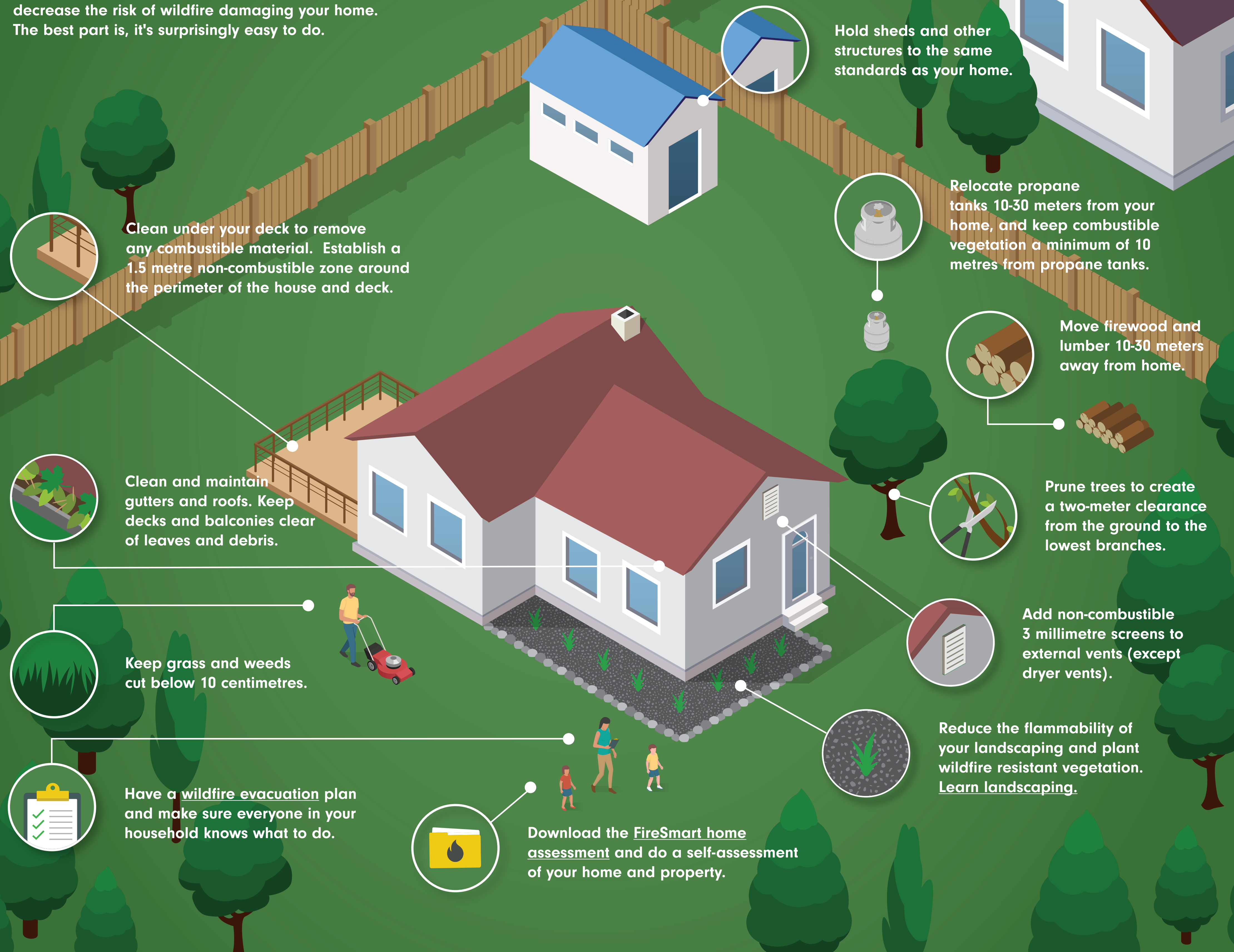
[www.firesmartbc.ca](http://www.firesmartbc.ca)





# Tips to FireSmart Your Home

Taking action to FireSmart your property will dramatically decrease the risk of wildfire damaging your home. The best part is, it's surprisingly easy to do.



Clean under your deck to remove any combustible material. Establish a 1.5 metre non-combustible zone around the perimeter of the house and deck.

Clean and maintain gutters and roofs. Keep decks and balconies clear of leaves and debris.

Keep grass and weeds cut below 10 centimetres.

Have a wildfire evacuation plan and make sure everyone in your household knows what to do.

Download the FireSmart home assessment and do a self-assessment of your home and property.

Hold sheds and other structures to the same standards as your home.

Relocate propane tanks 10-30 meters from your home, and keep combustible vegetation a minimum of 10 metres from propane tanks.

Move firewood and lumber 10-30 meters away from home.

Prune trees to create a two-meter clearance from the ground to the lowest branches.

Add non-combustible 3 millimetre screens to external vents (except dryer vents).

Reduce the flammability of your landscaping and plant wildfire resistant vegetation. Learn landscaping.



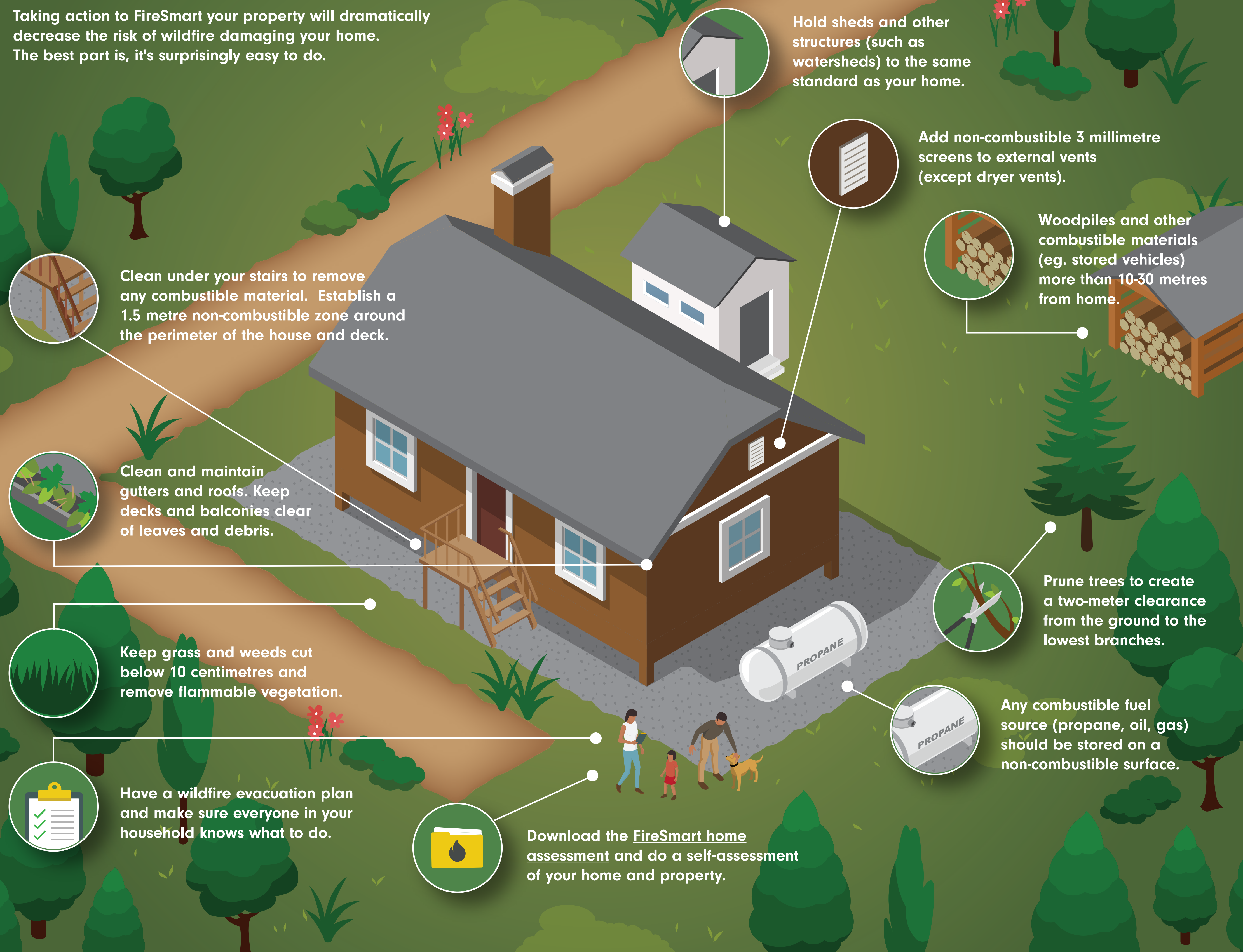
BRITISH COLUMBIA  
**FireSmart**<sup>TM</sup>

Learn more at [FireSmartBC.ca](https://www.firesmartbc.ca)



# Tips to FireSmart Your Home

Taking action to FireSmart your property will dramatically decrease the risk of wildfire damaging your home. The best part is, it's surprisingly easy to do.



Hold sheds and other structures (such as watersheds) to the same standard as your home.

Add non-combustible 3 millimetre screens to external vents (except dryer vents).

Woodpiles and other combustible materials (eg. stored vehicles) more than 10-30 metres from home.

Clean under your stairs to remove any combustible material. Establish a 1.5 metre non-combustible zone around the perimeter of the house and deck.

Clean and maintain gutters and roofs. Keep decks and balconies clear of leaves and debris.

Keep grass and weeds cut below 10 centimetres and remove flammable vegetation.

Have a wildfire evacuation plan and make sure everyone in your household knows what to do.

Download the [FireSmart home assessment](#) and do a self-assessment of your home and property.

Prune trees to create a two-meter clearance from the ground to the lowest branches.

Any combustible fuel source (propane, oil, gas) should be stored on a non-combustible surface.



BRITISH COLUMBIA  
**FireSmart**<sup>TM</sup>

Learn more at [FireSmartBC.ca](https://www.firesmartbc.ca)





HOME PARTNERS PROGRAM

Learn more about  
receiving a **FREE**  
home assessment  
with FireSmart BC



[firesmartbc.ca](https://firesmartbc.ca)